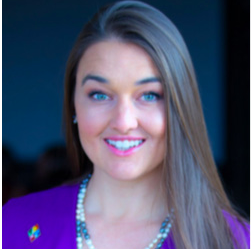


# AUTISM HOUSING NETWORK

BRINGING TOGETHER THE BEST IDEAS IN HOUSING FOR AUTISTIC ADULTS AND OTHERS WITH INTELLECTUAL/DEVELOPMENTAL DISABILITIES (I/DD)



Desiree Kameka is the Director of Community Engagement and Housing Networks for the Madison House Autism Foundation (MHAF). Under her leadership, Madison House has launched:

**The Autism Housing Network (AHN):**

A hub of housing information for neurodiverse adults and their families

**Coalition for Community Choice (CCC):**

Bringing stakeholders together to engage and inform policymakers of the critical need for variety in lifespan choices and sharing innovative local community examples

**Empowering Communities Initiative (ECI):**

Private consultations and workshops from visioning to execution of emerging housing opportunities

For the last decade, Ms. Kameka's work for MHAF has focused on researching housing solutions, advocating on issues of autism in adulthood, and presenting her findings at local and national gatherings. She has visited over 100 residential opportunities and social enterprises across the USA and abroad, highlighting their unique victories and learning curves while sharing stories of individuals on the spectrum or who have other developmental disabilities. Her passion is supporting autistic and other neurodiverse adults and their families to create a future that is full of promise and one that is life affirming.

A recognized disability housing expert and keynote speaker in conferences across the country, Ms. Kameka is cited in media outlets such as The Atlantic, Rolling Stone Magazine, NPR, Psychology Today and ABC News. In addition, Desiree's work in housing is included among international academics and professionals in the pioneering scholarly volume Autism Spectrum Disorder in Mid and Later Life, edited by Scott D. Wright, PhD, which covers the issues faced by aging individuals on the autism spectrum. She accepted invitations to speak at the UBS Global Autism Innovation Roundtable, the United Nations World Autism Awareness Day, Great Minds Coming Together on Autism International Conference, and at the National Institute of Health (NIH) to the Interagency Autism Coordinating Committee (IACC). Ms. Kameka is proud to have been invited to participate in IACC's autism housing workgroup.

Proposal requests are encouraged:

The Autism Housing Network (AHN) is a project of the Madison House Autism Foundation, a 501(c)3 public charity, which focuses on addressing the lifespan challenges facing adults on the autism spectrum and people who love them. EIN-32-0260393



AUTISM HOUSING NETWORK

ADDRESSING THE NEEDS OF ADULTS WITH AUTISM

820 West Diamond Avenue  
Suite 120  
Gaithersburg, MD 20878

[www.madisonhouseautism.org](http://www.madisonhouseautism.org)  
a 501(c)3 nonprofit organization



### Additional services & Presentations offered:

- Benefits and Considerations of various housing and support models (neutral sharing of differences in traditional and emerging models)
- Housing as “Key to Stability”: Planning financially for the future using 100% government funding, public and private investment and 100% private pay (framing each option via the corresponding financial lens)
- Best Practices for the development of multi-family and mixed-use planned communities serving neurodiverse citizens
- Medicaid HCBS waiver regulations and person centered planning, a policy focused presentation
- State-specific data and analysis on affordable housing and long term support services trends
- Custom presentations available, catered to individual client needs

### Service for emerging projects and housing developers:

- Interactive visioning sessions for emerging projects
- Consultations for overcoming obstacles or lessons learned
- Review of property, website, programmatic structure, architecture and amenities
- Understanding settings requirements for Medicaid recipients
- Preparation of state and local statistics of this population
- Develop needs assessment survey, project-specific interest survey or other assessment of specialized need

### Service for community leaders or organizations:

- Series of educational presentations leading to a local needs assessment survey for lifespan opportunities, service delivery options and housing preferences
- Local market analysis and report for development of a grassroots campaign
- Technical assistance for development of advocacy materials or talking points

### Service for service providers:

- Consultations for overcoming obstacles or lessons learned
- Addressing challenges regarding supporting persons with autism
- Understanding changing Medicaid requirements
- Preparation of state and local statistics representing need



### Professional Services :

- Consultations to overcome obstacles and share lessons learned from other housing initiatives
- Development of survey and tools for assessment of local/state need
- Review of housing/property design, technology, service delivery, and amenities
- Strategies for organizations and businesses to address unique challenges and support individuals on the autism spectrum
- Assistance with grassroots organizing and tools for enhancing community and housing development in local areas
- Preparation of state and local statistics

### Details and fees :

- 30 minute consultation or technical assistance with email follow up with specific next steps and contacts: **\$100**
- Hourly rate for contracted work or research, minimum 3 hours: **\$200 per hour**
- In-person events, including additional reimbursement for expenses and travel, range from **\$500 to \$10,000**

### Info about the AHN :

- 350K+ page visits
- 100K+ unique users
- 2000+ participants connecting and creating custom toolkits
- 200+ housing listings
- 350+ housing resources
- Five part video series featuring 18 different housing and service delivery models

